

The
**PENSACOLA
MESS
HALL**

Field Trip and Outreach Program Guide



418 E. Wright Street, Pensacola, FL

877-YES-MESS

PensacolaMESSHall.org

Produced by the Pensacola MESS Hall
for the 2025-2026 school year.

This copy is a draft.
Details of the offered programs are subject to change.

Please refer to our website for the most up-to-date information.

PensacolaMESSHall.org/education/



We believe . . .

That science is for everyone
and that there are no limits to curiosity.



We take pride in serving our local school systems.



Learn more about us on our website.
PensacolaMESSHall.org/about/

Field Trip Menu

We have hands-on math, engineering, and science activities for all elementary and middle school grade levels. Email us at groups@pensacolameshall.org to book a program for your school or classroom.



1

ILLUMINATE: COLOR

Investigate light, color, and perception with an interactive science show and six hands-on stations.

Grades 3-6



NEW

2

THE REFLECTIVE LAB

Deepen the engagement of a field trip with a facilitated workshop and three hands-on activity stations.

Grades 4-6



3

GET GOING WITH GRAVITY

Balance the forces with an interactive science show and six hands-on stations.

Grades K-2



877-YES-MESS

GROUPS@PENSACOLAMESSHALL.ORG

Outreach Menu

Let us bring all hands-on math, engineering, and science activities to your school! Increase family engagement and student interest in math and science by booking a program. Visit our website PensacolaMESSHall.org/education/ to reserve a date.

4



FAMILY SCIENCE NIGHT

Our most popular outreach for family engagement! We set up 10 hands-on science stations at your school with 2 staff members.

5



NEW

FAMILY MATH NIGHT

Increase family engagement at your school with 10 hands-on math stations!

6



NEW

EYE SPY COLOR

We come to you for an assembly show focusing on color, light, and the biology of vision & perception.

Grades K-2

7



WALK IN THE WATERSHED

In this assembly show, students become part of the watershed to understand the water cycle and our local environment.

Grades 3-6

MIDDLE SCHOOL WORKSHOPS

Email us for information on what we offer for middle school classrooms! Groups@pensacolamesshall.org

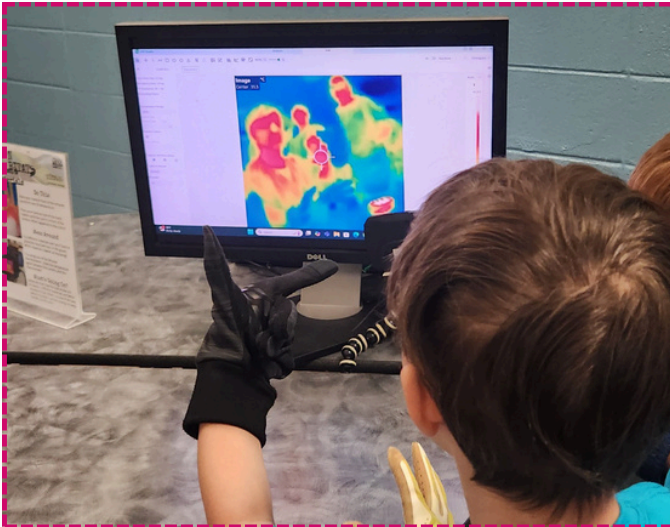


877-YES-MESS

GROUPS@PENSACOLAMESSHALL.ORG

Grant-Funded Opportunities

These outreach programs are funded by various organizations and are available to schools based on grant specifications. Please email us at groups@pensacolamesshall.org to check eligibility.



8

HUMAN HABITATS

Human Habitats begins with an interactive show about shared community resources. The show is followed by six hands-on stations to further understand how humans build, travel through, and power their communities.

Grades 3-6
Funded by the Gulf Research Project of the National Academy of Sciences.



9

WATER & MY COMMUNITY

The classroom program is comprised of four visits focusing on water, its properties, and how it affects our community. Students then identify a problem and a solution for their classroom or school through civic action.

Grades 4 & 5
Funded by the Gulf Research Project. Includes a stipend for participating teachers.



10

SIXTH SENSE

Expand the hands-on science activities for 6th grade students at the elementary school level. This multi-year project brings MESS Hall educators to your classroom with standards-aligned hands-on activities.

Previously funded by the Institute of Museum & Library Services; now funded by a gift from Next Era Energy Foundation.



1

Illuminate: Color Field Trip



Illuminate: Color is an all hands-on experience at the Pensacola MESS Hall. After an interactive science show, students rotate through six hands-on activity stations to investigate light, biology, & properties of matter. All stations align with Florida state standards.

Suitable for grades 3-6.

Field trips last 1 1/2 hours and typically begin at 10 AM.
Groups must depart by 11:30 AM.
Maximum number of learners = 60
\$12 per student; minimum cost is \$350
Chaperones: 1 adult for every 10 students in grades 3+



ACTIVITY STATIONS

- Light & Shadows
- Hinged & Cylindrical Mirrors
- Zoetropes
- Shape, Color, Texture
- Illusions & Afterimages
- Filtered Light



877-YES-MESS



PensacolaMESSHall.org



418 E. Wright Street

2

Reflective Lab Field Trip



The Reflective Lab is an all hands-on field trip to the MESS Hall enhanced by a 40 minute workshop & three activity stations. Participants use models to plumb the depths of the Gulf and create a report using color for use by a government agency. The activity stations are explored either before or after the workshop.

Enhanced field trips last 1 1/2 hours and typically begin at 10 AM.
Groups must depart by 11:30 AM.
Maximum number of learners = 50
\$14 per student; minimum cost is \$350
Chaperones: 1 adult for every 10 students



WORKSHOP

Mapping with Color

This workshop integrates science, math, and mapping skills that can be applied in a real world situation.

ACTIVITY STATIONS

Shape, Color, Texture
Illusions & Afterimages
Light & Shadows



877-YES-MESS



PensacolaMESSHall.org



418 E. Wright Street

3 Get Going With Gravity

Field Trip



Get Going with Gravity is an all hands-on experience at the Pensacola MESS Hall. Students balance forces during the opening science show and continue to investigate other forces such as gravity, magnetism, & friction while rotating through six activity stations that are aligned with Florida standards.

Suitable for K*-2.

Enhanced field trips last 1 1/2 hours and typically begin at 10 AM.

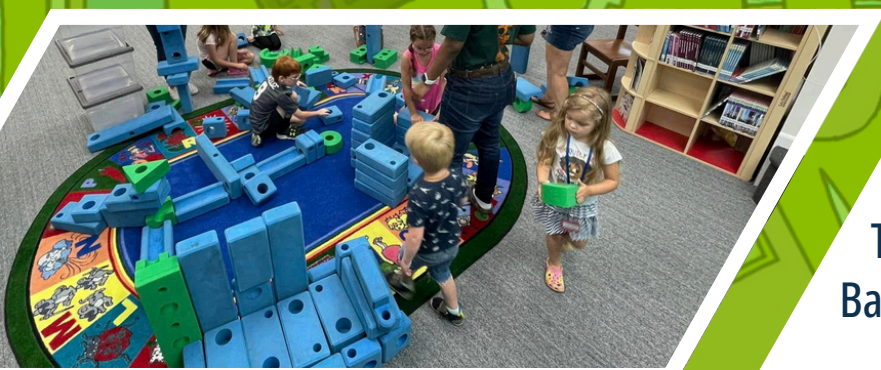
Groups must depart by 11:30 AM.

Maximum number of learners = 60

\$14 per student; minimum cost is \$350

Chaperones: 1 adult for every 5 students

*Kindergarten field trips available starting 2026



ACTIVITY STATIONS

Build Big
Plan & Build
Air-chitect
Shape Up
Tinker Towers
Balancing Act



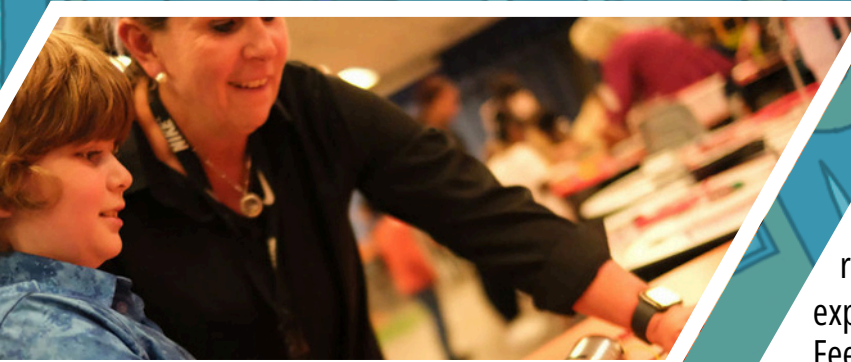
Family Science Night

Outreach



The MESS Hall comes to your school and sets up a science museum in your space with activities that are great for the whole family!

Family Science Night with the Pensacola MESS Hall is a hands-on educational event designed with students and families in mind. These events provide an opportunity for families to collaborate and explore a variety of interactive science activities that are aligned to educational standards — bringing parents and caregivers further into the progress of their student's learning.



Main Attraction Bring students, teachers, and parents together for an evening of hands-on science exploration. The MESS Hall brings all of the equipment for ten stations in your school gym or cafeteria. Fee: \$550

Science Station Add-On Want to add some hands on science activities to your community event? You can request our mini menu with 5 hands on science exploration stations. This is perfect for book fair nights! Fee: \$350



877-YES-MESS



PensacolaMESSHall.org




418 E. Wright Street

5

Family Math Night Outreach



A new pattern for family engagement nights. The MESS Hall comes to your school and sets up all hands-on math stations! 

Family Math Night is just like our popular Family Science Nights, but with a math twist. It's a fun, hands-on event where students & their families explore math together through games, puzzles, and creative challenges. We'll set up 10 interactive stations focused on key math skills like measurement, patterns, geometry, and problem-solving. Each station is designed for all ages, so students, siblings, and parents can all join in and have fun learning together.



The cost for the 2025–2026 school year is \$475. This is a special introductory price since it's a brand new program.

The MESS Hall provides:

- All materials and signage for 10 stations
- Friendly staff to set up, guide the event, and clean up
- Standards-aligned activities that support classroom learning



877-YES-MESS



PensacolaMESSHall.org



418 E. Wright Street

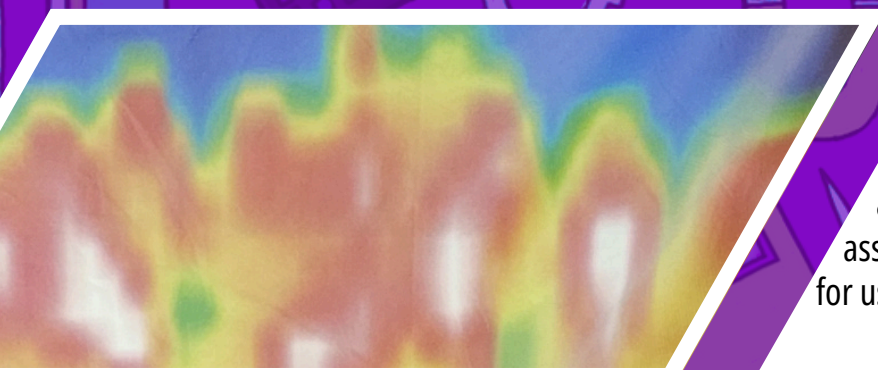
6

Eye Spy Color Assembly Show



Our dynamic outreach educators bring entertaining science light and color demonstrations to your school assembly space. This 45-minute show will increase your students' curiosity for the world around them.

Eye Spy Color is an assembly science participatory show great for kindergarten through second grade classes. Join our facilitators for a journey through how we see and perceive color. Have your students experience after images, color mixing (without the mess of paint), color illusions, and the Stroop effect. This offering includes a take home sheet to extend the learning.



COST & DETAILS

\$350 for one show. \$150 for each additional show.

The MESS Hall provides two outreach educators and all the props needed for a science show in your assembly area along with a take-away hands-on activity for use in the classroom or at home.



877-YES-MESS



PensacolaMESSHall.org



418 E. Wright Street

7

Walk in the Watershed Assembly Show



Bring an entertaining participatory science and the dramatic arts to your school with this 45-minute show about our local watershed & its inhabitants!

Walk in the Watershed is an assembly science participatory show great for third through sixth grades. Written with guidance from the Pensacola & Perdido Bays Estuary Program, this show allows students to become both the habitats and the animals of our watershed. Along the way, they learn the properties of the habitats and how humans impact our part of Florida.



COST & DETAILS

\$350 for one show.
\$150 for each additional show.

The MESS Hall provides two outreach educators and all the props needed for a science show in your assembly area along with a take-away hands-on activity for use in the classroom or at home.



8

Human Habitats

Grant-Funded Outreach



This grant-funded program follows the well-received Beach & Beyond, which focused on the plant & animal life in and around the Gulf. Human Habitats begins with an interactive show about shared community resources. Students then engage with six hands-on activity stations to further understand how humans build, travel through, & power their communities.

This outreach is free to eligible schools. The stations are geared for students in third through sixth grades. Schools that participated in Beach & Beyond are eligible for this program and are encouraged to schedule this experience as soon as possible. The show duration is 30 minutes. Hands-on activities are 50 minutes per 60 students.



ACTIVITY STATIONS

- Conductors & Insulators
- Unstable Ground
- Span It
- City Planning
- Energy Conversion
- Traveling Salesperson



877-YES-MESS



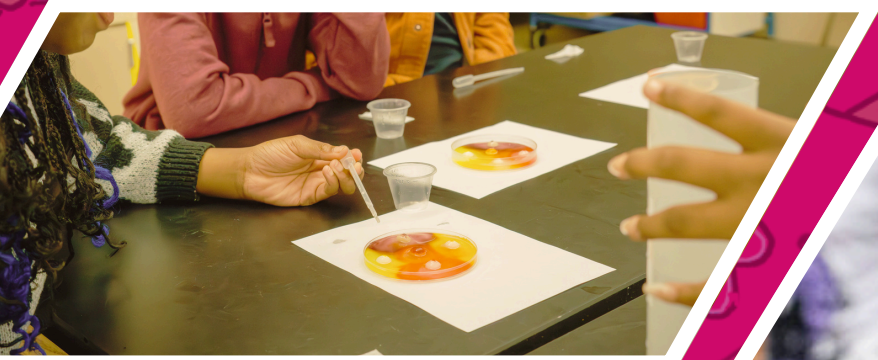
PensacolaMESSHall.org



418 E. Wright Street

9

Water & My Community Grant-Funded Outreach



MESS Hall educators lead a series of classroom workshops for 4th or 5th grade students. The first three visits center around water, its properties, and sampling of local water sources. The fourth visit allows students to roleplay as resiliency planners for a fictional city, where they have to consider multiple viewpoints on responding to extreme precipitation.

Students are then encouraged to interview stakeholders at their school to identify issues related to water or resource use. They then vote on which issue to address with guidance from the MESS Hall. An intervention will be chosen from a menu of choices, and that will be installed at the school within the school year.



COST & DETAILS

This outreach is free to eligible schools. The activities are most suitable for students in 4th or 5th grades.

Schools that participated in Beach & Beyond are eligible and are encouraged to schedule early.

Compensation is available for participating teachers.

WHAT WE DO



The Pensacola MESS Hall is a place for hands-on science that embraces the learner's need to "mess around" to gain an intuitive understanding of the fundamental principles of Math, Engineering, Science, and Stuff. We reach learners through a variety of avenues, including museum visits, camps, special programs, field trips, and outreach programs.

WHO WE ARE



We are a small staff passionate about sharing the excitement of math, engineering, and science. Volunteers, both teen and adult, engage learners in hands-on activities. As a nonprofit, community support is integral to our success.

OUR DIFFERENCE



Our mission is to inspire curiosity, experimentation, and creative problem-solving through exploration of math, engineering, science, and stuff. Our activities are designed to encourage learners to think scientifically rather than absorb set facts. We strive to attract and create a community of critical and creative thinkers of all ages who are inspired by and understand the basic principles of science.

Learn more about us on our website.
PensacolaMESSHall.org/about/

BECOME A MEMBER

Members receive free admission to the museum, discounts on camps and birthday parties as well as reciprocal benefits or admission to over 300 museums worldwide. Sign up online or at the museum.



Stay tuned
for updates!

The MESS Hall often receives grants to bring educational programs into our community. Follow us on social media or email us to receive news updates.



CONTACT US!



pensacolamesshall.org



info@pensacolamesshall.org



1-877-937-6377

School Year Hours

Tuesday–Friday 12pm to 5pm

Saturday 10am to 5pm



The staff of the Pensacola MESS Hall wrote a book called *What's This MESS?* We were able to print enough copies to provide one book for each public elementary school in Escambia County, Florida thanks to a grant from Sunday's Child. When students check out the book, they can bring it to the MESS Hall for free entry for their family (up to 6 people, one of which must be an adult).



PENSACOLAMESSHALL.ORG



PENSACOLA MESS HALL

418 E. Wright Street, Pensacola, FL

877-YES-MESS

PensacolaMESSHall.org